



Zero-Dose
LEARNING HUB

Zero-Dose Learning Hub

April 29-30, 2024

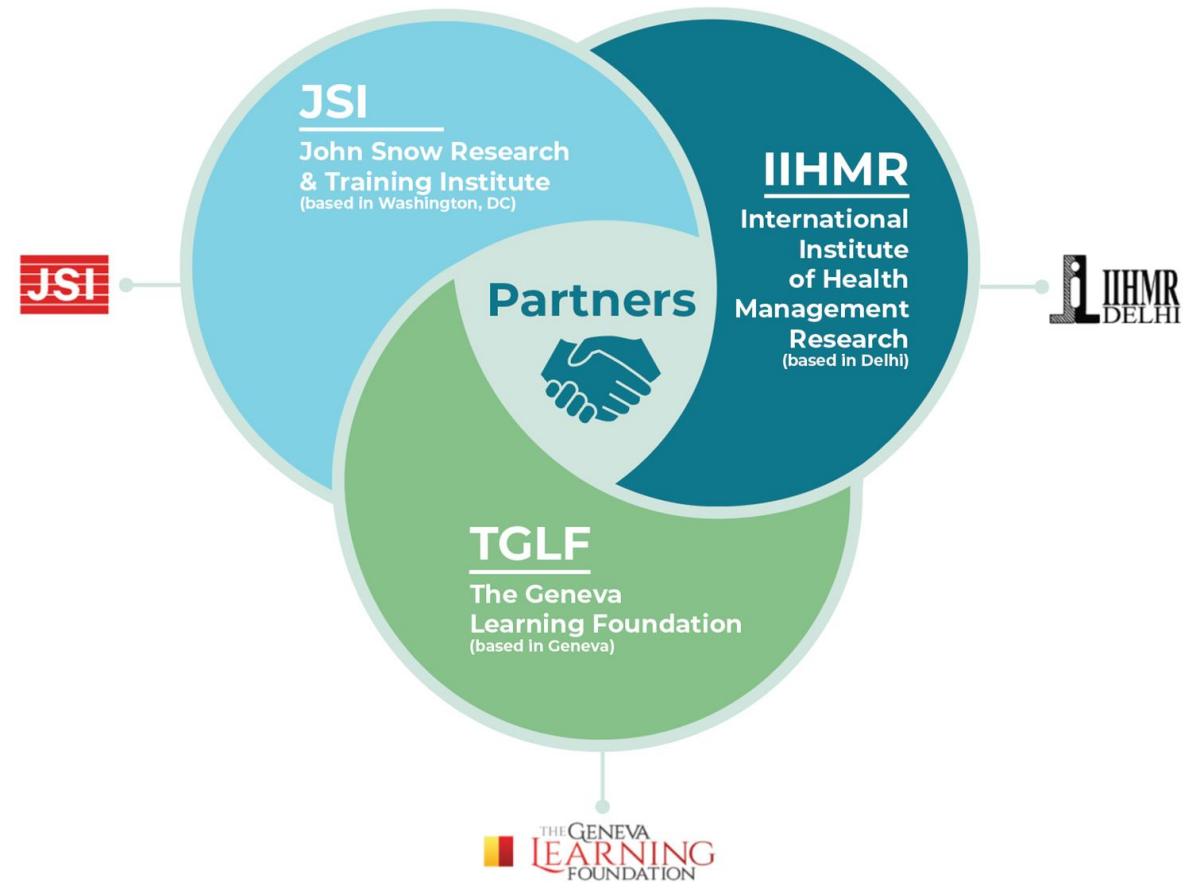


Gavi ZDLH Model

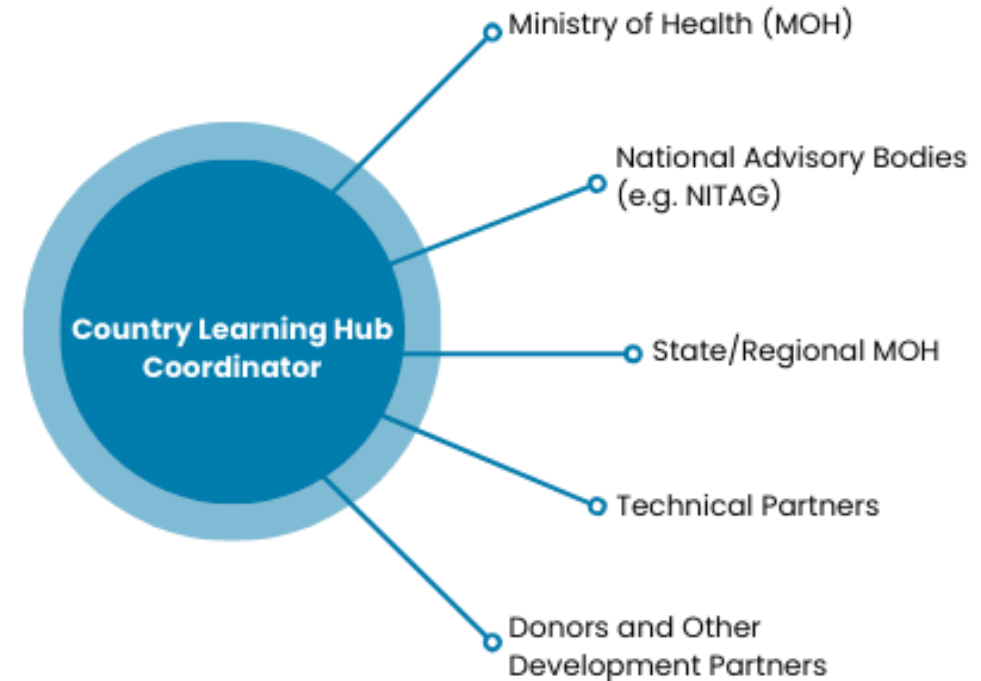
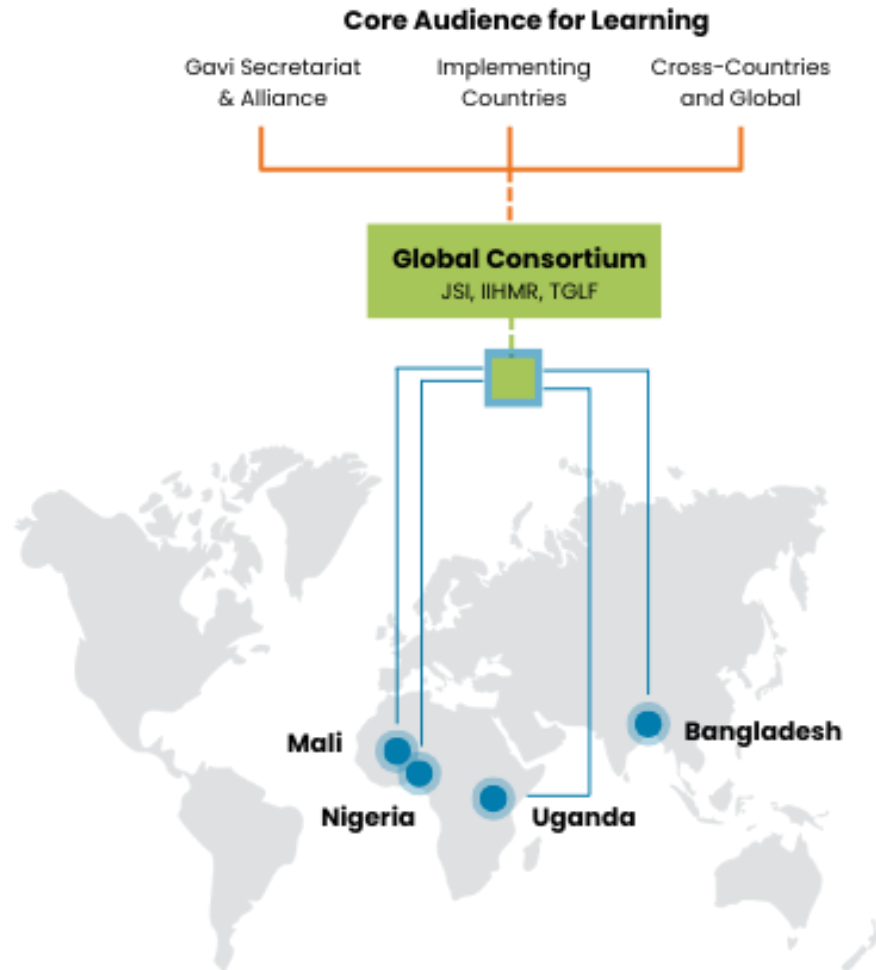


- Hub-and-spoke model, with four country learning hubs (CLHs) in Bangladesh, Mali, Nigeria, and Uganda, comprised of local partners/consortiums that generate and use county-level programmatic data and evidence.
- At the global level, the ZDLH synthesizes and manages evidence and learnings on effective methods and approaches for identifying and reaching zero-dose children and missed communities.
- ZDLH collaborates with the CLHs to advance the uptake of research and evidence to improve each country's immunization policy and programming, with a focus on subnational levels.

ZDLH Consortium Partners



Country Learning Hubs



* Local partners: Generate evidence related to barriers and inequities faced by zero-dose children and missed communities through a range of MEL activities.

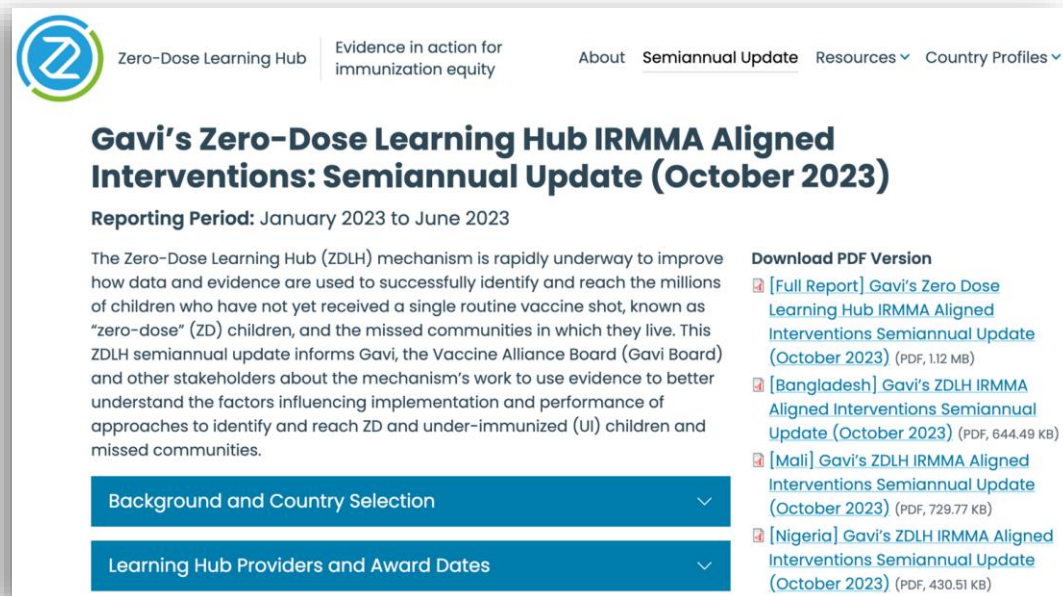
ZDLH Objectives

- To **support implementation of the country learning hubs** through technical assistance, operational troubleshooting, and tailored capacity strengthening activities
- To **synthesize and share effective evidence and learning** to the LH and other Gavi countries and across the Alliance, other implementing partners and donors, and regional and global networks



Semiannual Update

Documenting and sharing key learnings from CLHs



Zero-Dose Learning Hub Evidence in action for immunization equity About **Semiannual Update** Resources Country Profiles

Gavi's Zero-Dose Learning Hub IRMMA Aligned Interventions: Semiannual Update (October 2023)

Reporting Period: January 2023 to June 2023

The Zero-Dose Learning Hub (ZDLH) mechanism is rapidly underway to improve how data and evidence are used to successfully identify and reach the millions of children who have not yet received a single routine vaccine shot, known as "zero-dose" (ZD) children, and the missed communities in which they live. This ZDLH semiannual update informs Gavi, the Vaccine Alliance Board (Gavi Board) and other stakeholders about the mechanism's work to use evidence to better understand the factors influencing implementation and performance of approaches to identify and reach ZD and under-immunized (UI) children and missed communities.

Download PDF Version

- [Full Report] [Gavi's Zero Dose Learning Hub IRMMA Aligned Interventions Semiannual Update \(October 2023\)](#) (PDF, 1.12 MB)
- [Bangladesh] [Gavi's ZDLH IRMMA Aligned Interventions Semiannual Update \(October 2023\)](#) (PDF, 644.49 KB)
- [Mali] [Gavi's ZDLH IRMMA Aligned Interventions Semiannual Update \(October 2023\)](#) (PDF, 729.77 KB)
- [Nigeria] [Gavi's ZDLH IRMMA Aligned Interventions Semiannual Update \(October 2023\)](#) (PDF, 430.51 KB)

Background and Country Selection

Learning Hub Providers and Award Dates

- Provides 'top view' of progress reaching ZD, including 'why' and 'how' within and across LH countries
- Data trends in priority indicators at national level,, Gavi-supported districts, and CLH sub-districts
- Interpretation and learning
 - ZD interventions by IRMMA
 - Why changes may (or not) be happening
 - Insights into other questions such as determinants, gender
 - Emerging findings from system assessments, implementation research, etc



Synthesis and Guidance

Prioritized learning focused on the use case

- ZDLH synthesis work responds to emerging areas of learning based on different experiences of the CLHs
- Fills an identified gap and contributes to the knowledge base
- Examples:
 - Guidance for costing/incremental cost of reaching ZD children
 - Synthesis of LQAS approaches for ZD identification and monitoring in LH countries and guidance for using LQAS for decentralized immunization measurement
 - Political economy analysis of data systems, data users and program/policies to support CLH strategies for engaging stakeholders
 - Knowledge translation toolkit to support uptake of immunization evidence and learning in LH countries



Web Platform

zdlh.gavi.org

The screenshot shows the top navigation bar with the Gavi logo and a 'Back to main site' link. Below the navigation is the Zero-Dose Learning Hub logo and the text 'Evidence in action for immunization equity'. The main navigation menu includes 'About', 'Semiannual Update', 'Resources', and 'Country Profiles'. The main content area features a large image of a young child and a woman, with the headline 'Join us as we work toward immunization equity'. A text box below the headline states: 'The Zero-Dose Learning Hub highlights the work from four Country Learning Hubs in Bangladesh, Mali, Nigeria, and Uganda to use evidence to better understand the factors influencing implementation and performance of approaches to identify and reach zero-dose and under-immunized children and missed communities.'



ZDLH WEBINAR

Reflections on Identifying and Reaching Zero-Dose Children

Identifying and reaching zero-dose (ZD) children and missed communities remains one of the most complex challenges in the pursuit of global immunization equity. Reaching ZD children with life-saving vaccines requires clear and accurate data about who they are and where they live. Join the Gavi Zero-Dose Learning Hub (ZDLH) for a 75-minute interactive webinar featuring immunization leaders from four Country Learning Hubs (CLHs) in Bangladesh, Mali, Nigeria, and Uganda. The four CLH representatives will share their experiences using innovative methods to identify and reach ZD children and missed communities.

Featured Resources

Measuring Zero-Dose Children: Reflections on Age Cohort Flexibilities for Targeted Immunization Surveys at the Local Level

Published in 2024 by Zero-Dose Learning Hub

Zero-dose (ZD) children is a critical objective in global health, and it is at the heart of the Immunization Agenda 2030 (IA2030) strategy. Coverage for the first dose of diphtheria-tetanus-pertussis (DTP1)-containing vaccine is the global operational indicator used to

Early Learning from Zero-Dose Practitioners in Nigeria and Uganda: Gavi ZDLH Inter-Country Peer Exchange (ZDLH-X2)

Published in 2023 by The Geneva Learning Foundation

In September 2023, the Zero-Dose Learning Hub's (ZDLH) Learning Innovation Unit (LIU), held its second inter-country peer learning exchange, "ZDLH-X," focused on zero-dose (ZD) and under-immunized (UI) children and missed-community challenges in Nigeria and



Key Resources

- [Measuring Zero-Dose Children: Reflections on Age Cohort Flexibilities for Targeted Immunization Surveys at the Local Level](#)
- [ZD Landscapes:](#)
 - [Bangladesh](#)
 - [Mali](#)
 - [Nigeria](#)
 - [Uganda](#)
- [ZDLH Webinar Series](#)
- [ZDLH-X Conceptual Framework: Reaching Zero-Dose Children](#)



ZDLH Costing Support

- Synthesis of methods and approaches to measuring the incremental cost of reaching ZD children (technical brief)
- Consultations/interviews with CLH teams, EPI stakeholders, global costing experts, to identify the inputs and resources (financial and operational) to reach ZD children in different settings and feasible approaches to estimate the additional costs for targeted ZD interventions
- Guidance document for ZD Costing to support a harmonized approach across CLHs – costing methods, tools, indicators, calculations and assumptions
- Technical support to the CLHs to incorporate costing indicators and study designs for targeted subnational areas to generate reliable costing data
 - Planning and standardization of costs
 - Include economic costs often left out of analyses (in kind costs, personnel time)
 - Calculate costs in different ZD contexts/scenarios so these can be compared

CLH Costing Activities

Nigeria example:

- Costing approach embedded in the CLH implementation research design in 8 target LGAs (districts) across 4 states
- Compares costs, cost effectiveness and incremental costs of reaching ZD for three existing RI strategies (OIRIS, PIRI and OOS) in reaching ZD in different contexts at LGA level
- Mixed methods approach with a set of costing tools
 - Household/caregiver costs (community survey)
 - Supply side costs health facility and service provider (HFA tool and KIIs)
 - Support/training costs (budget analysis)
- Timeline for IR: Q2 2024 through Q2 2025



Challenges and Considerations

- Short timeframe of the learning hub IR studies
- Need to measure effectiveness of specific ZD interventions
- Pre/post designs used for implementation research in LH countries (except Bangladesh)
- Focused in subnational areas selected because ZD prevalence is higher
- Synthesis of costing evidence and learning across countries and ZD contexts (high and low prevalence countries)
 - Use of multiple age cohorts
 - Contextual data to help explain findings
 - Harmonized approach to ZD costing across LH countries (cost categories, indicators, denominators)



Zero-Dose
LEARNING HUB

Contact Us

zdlh.gavi.org

nancy_vollmer@jsi.com

zero_dose@jsi.com